

# Iteaduno BT 1.0



## Overview

Iteaduno-BT is an Arduino compatible board with a master/slave Bluetooth Module HC-05. It based on Arduino Duemilanove, 100% compatible to its existing program, shield and IDE. On the hardware part, remarkable changes are taken to improve the flexibility and user experience.

## Basic features

- Design for Bluetooth communication.
- Inherits all of Arduino Duemilanove's features.
- Compatible with Arduino UNO/Duemilanove pins, holes and dimensions.
- 3.3V/5V Operating Voltage selection
- More visible location of Indicator LEDs
- Wide range external input from 7~23V DC
- All pins out for Sensor and Servo
- UART/IIC interface breakout

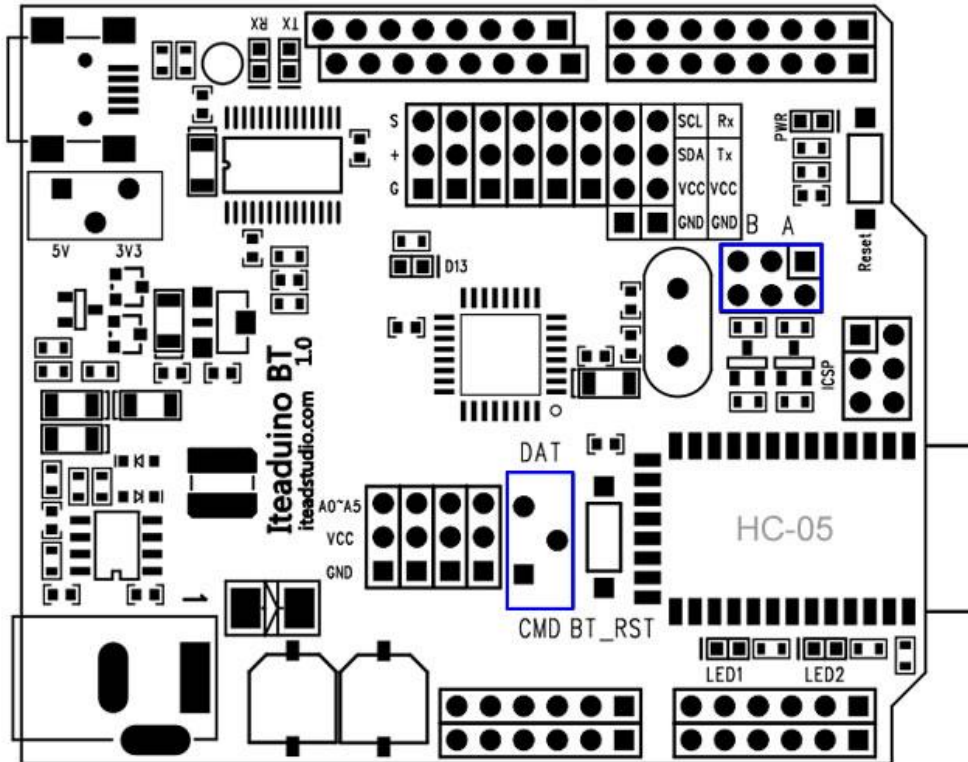
## Specifications

|                           |                           |
|---------------------------|---------------------------|
| Microprocessor            | ATmega328P                |
| PCB size                  | 10mm X 82mm X 1.6mm       |
| Indicators                | Power,TX,RX,D13,LED1,LED2 |
| Power supply(recommended) | 7-23V DC                  |
| Power supply(limits)      | 23 VDC (max)              |
| Communication Protocol    | UART,SPI,IIC              |
| Clock Speed               | 16MHz                     |
| RoHS                      | Yes                       |

## Electrical Characteristics

| Specification          | Min | Type  | Max | Unit |
|------------------------|-----|-------|-----|------|
| Input voltage          | 7   | -     | 23  | VDC  |
| Operating Voltage      | -   | 3.3/5 | -   | VDC  |
| DC Current per I/O Pin | -   | 40    | -   | mA   |

## Hardware



Digital/Servo Interface: D0~D13 pin

Sensor Interface: A0 A1 A2 A3 A4 A5 pin

## HC-05 operate mode set switch

There is a 1P2T switch for HC-05 operation mode set. When the switch is set on "DAT" side, the HC-05 will work in the data mode. When the switch is set on "CMD" side, the HC-05 will work in command mode, in this mode, Iteaduno/FT232R could send the AT command to configure the HC-05 module (Using Baud Rate 38400).

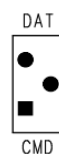


Figure 1

## Communicate mode set jumper

There is a jumper to set the connections of HC-05. When the jumper is set in B, the HC-05 communicates to FT232R, when the jumper is set to A, the HC-05 communicates to Atmega328P(board).

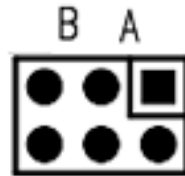


Figure 2

## Links and References

- ITead Studio Site: [iteadstudio.com](http://iteadstudio.com)
- Arduino site: [arduino.cc](http://arduino.cc)
- Getting started with Arduino: [arduino.cc/en/Guide/Windows](http://arduino.cc/en/Guide/Windows)

## Revision History

| Rev. | Description     | Release date |
|------|-----------------|--------------|
| v1.0 | Initial version | 2011-9-15    |